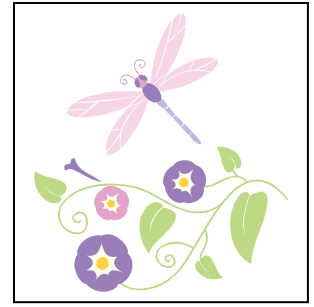




# Trowse Primary School

Summer Newsletter  
First Half Term – 2008/09



## *Nearly half term already? Surely not...*

Doesn't time fly when you are having fun! - That and the fact that this half term is only five weeks long. Onto school news...There are a few items to report to you at the moment.

Firstly, we will be very sad to lose Mrs Bagshaw from the teaching staff from the end of this term. Mrs Bagshaw has decided to take early retirement and enjoy life outside of school. We are sad to see her go, but happy for her at the same time and are extremely grateful for all her hard work over the years. The children she has taught always do well and we will all miss her greatly.

This does of course mean that a new teacher will be starting in September. Interviews are on Thursday 21<sup>st</sup> May. There will be a number of parts to the interview; each candidate will teach for a short time whilst being observed, be interviewed by myself and the Governors and the older members of the School Council will interview each candidate (guided by an adult) and report back to me on their findings.

I have collated the findings from the 'extended services' questionnaires you sent back. It seems that there is sufficient interest in before and after school care to start looking at the next stage. The governors have started discussions, and will continue them in an extra meeting, with regard to whether this need can be met by the school. Some of the options open to us are: the school takes on and runs the provision, the school finds a suitable company to run the provision and they hire our premises, or we as a school do not have the premises required and cannot take it further at all. This would then be looking at other facilities in the village (YMCA, Manor Rooms for example) and another way of running the provision required.

The new style allotment, with its raised beds, is now fully operational! Thank you to those who helped it happen; I know the children will benefit from the ease of access and ease of growing. Remember- after school on a Friday the gardening club has a 'plant sale' to help fund the allotment refurbishment, so if you have not planted up your tomatoes yet, why not come along and buy a bargain!

Three year 5 children ran in the Norfolk cross-country finals two weeks ago and were a credit to the school. Well done Marcia, Ellie and Louis!

Chey in year 6 has qualified for the national finals for chess and will have to travel to Manchester for this! We will all be supporting you from afar Chey!

Finally, Monday night at 8pm was the place to be this week for the launch meeting of the new 'Friends' association! My thanks go to all those involved in wanting to help raise money for the benefit of the children and bring the whole community even closer together, with the school playing a central part in that. Remember- the School Fete is in the afternoon of 19<sup>th</sup> June!

*Stuart Odell*

**HEAD TEACHER**

### Important Forthcoming Dates for remainder of School Year 08/09

3 <sup>rd</sup> April	End of Spring Term
20 <sup>th</sup> April	Start of Summer Term
4 <sup>th</sup> May	Bank Holiday
11 <sup>th</sup> to 15 <sup>th</sup> May	SATs Week
11 <sup>th</sup> May	Class 1 Visit to the Dinosaur Park
25 <sup>th</sup> to 29 <sup>th</sup> May	Half Term
11 <sup>th</sup> June	Cluster Choir Practice
18 <sup>th</sup> June	Cluster Concert – Class Three
19 <sup>th</sup> June	School Fete
22 <sup>nd</sup> June	New Intake Parents Information Evening
23 <sup>rd</sup> June	Class Two – Visit to How Hill
24 <sup>th</sup> June	Intake Afternoon – Class One
29 <sup>th</sup> June	Intake Afternoon – Class One
1 <sup>st</sup> July	Staff Training Day – <b>School Closed</b>
2 <sup>nd</sup> July	Science Olympiad
3 <sup>rd</sup> to 6 <sup>th</sup> July	Class Four – PGL visit - Caythorpe Court
7 <sup>th</sup> July	Open Afternoon – whole school
8 <sup>th</sup> July	Class 4 - Year 6 Crucial Crew event
9 <sup>th</sup> July	Intake Afternoon/Whole School move up day
9 <sup>th</sup> July	Year Six Transition Day 1
10 <sup>th</sup> July	Year Six Transition Day 2
13 <sup>th</sup> July	Sports Day
15 <sup>th</sup> July	Reserve Sports Day
15 <sup>th</sup> July	End of Year Junior Performance
16 <sup>th</sup> July	End of Year Junior Performance

### **Lunch boxes**

A couple of parents have queried whether we have any guidelines about what can and can't go into packed lunch boxes. The school does not have a policy about the food content of packed lunches, but would simply ask that parents provide a meal that is suitable to be easily eaten at school. If you need some ideas, the Schools Food Trust has an interesting website [www.schoolfoodtrust.org.uk](http://www.schoolfoodtrust.org.uk).

### 'Water Only' Policy

The School's Drinks policy was reviewed at the last Governors Meeting. It was agreed to uphold the policy for children to only bring in water in their bottles, particularly as lots of the children eat their packed lunch in a classroom. Children are encouraged to bring in a bottle of water to keep in their classrooms to drink during the day to make sure that they remain properly hydrated,

### Early notice...

Next year's SATs will take place during the week of 10<sup>th</sup> to 14<sup>th</sup> May. This is a particularly important week for our Year Six children, however all the junior children in Years 3 to 5 will be accessing the QCA optional tests as usual. The outcomes of these tests are very important in enabling us to help your child meet their full potential. Therefore we would ask that you avoid any GP or dental appointments during this week if possible. The school will be unable to approve any holiday requests during this week, following Norfolk County Council guidance.